



Mount Sinai Morningside

Site Resources



Icahn School
of Medicine at
**Mount
Sinai**

Library Access

Students have full access to the library from 9am-5pm. If interested in using the library after hours, you can request access with this form:

[MSM / MSW Library
After Hours Access Request](#)

Emergency Medicine

Computers



Secure Storage



Resident Room (located beside the Evaluation Unit) - secure/locked with a passcode

Study and Breakroom Space



Resident Room

Medicine

Computers and Study Space



Shared Clinical Documentation Rooms; Resident Lounge;
Medicine Department empty cubicles; GI dept library

Breakroom Space



Admin Suite: Resident lounge -
conference room with table,
connected to room with kiosks and
4 offices equipped with tv,
refrigerator, and snack
closet; Cafeteria; Main Hospital
Atrium

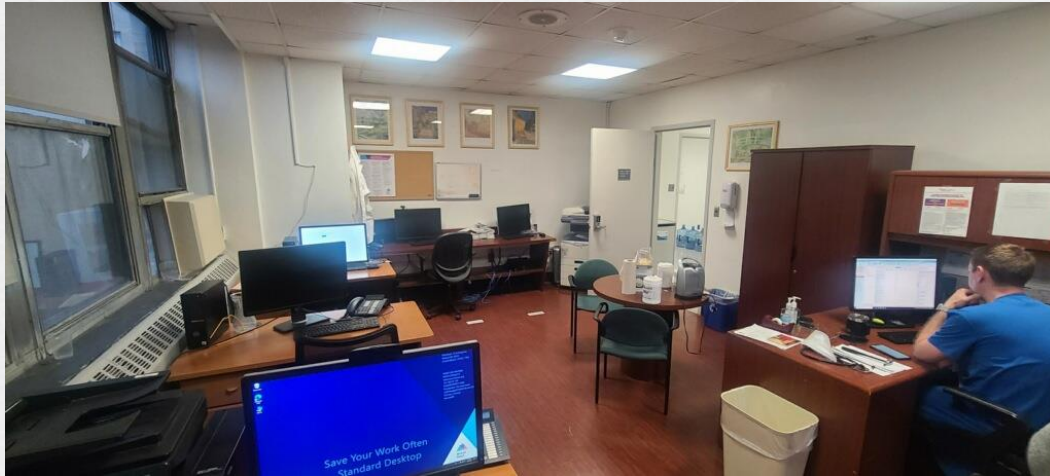
Secure Storage



Shared Clinical Documentation
Rooms (on wards, security
coded); Resident lounge
(coded); Medicine Dept Office

Neurology

Computers and Study Space



Clark 744B

Secure Storage and Breakroom Space



Clark 744B

Psychiatry

Computers



Computers for use are in the team rooms on each unit

Two computers dedicated to students in Babcock 5 West Conference Room

Secure Storage



Secure conference room, (Child Psych Unit);
Secure team rooms (for Adult Psych rotators in Clark 8)

Study and Breakroom Space



Library on the 8th floor of the Clark building; Cafeteria and Café can also be used for Breaks