



Mount Sinai Queens

Site Resources

Emergency Medicine

Secure Storage



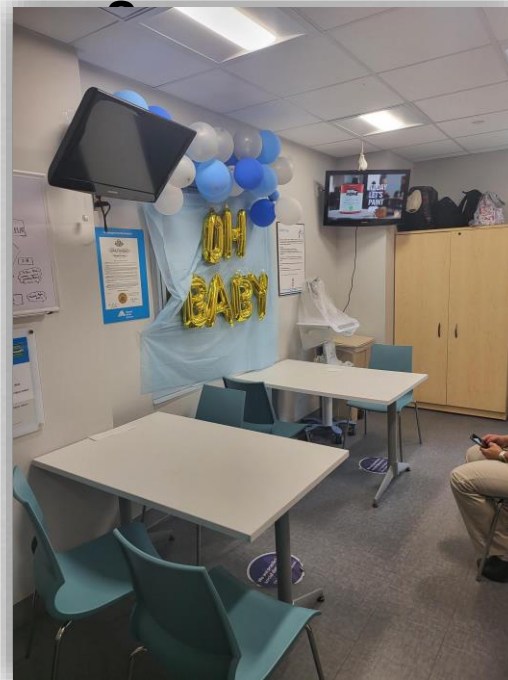
Closet/Cabinet in Staff Lounge

Study Space



Students can study in the staff lounge although due to the nature of the rotation, students will generally not have downtime and are only at the hospital for 8 hours

Breakroom



The staff lounge adjacent to the emergency department

Computers



Neurology

Secure Storage, Study Space, Breakroom Space and Computers

Students will have a workstation in 23-34 30th Avenue in Dr. Elissa Fory's Office where they can work, study, take a break and leave their belongings. Pictures coming soon.