



Icahn
School of
Medicine at
Mount
Sinai

Career Planning Services Newsletter

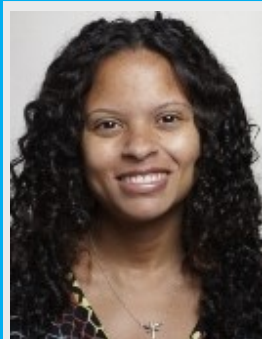
May 2017

Spotlight on: Pediatrics

Overview

From [AAMC Careers in Medicine](#) >choose your specialty> Pediatrics

Pediatrics is primarily concerned with the physical, emotional, and social health of children from birth to young adulthood. Concerned with more than just the physical well-being, pediatricians are involved with the prevention, early detection, and management of behavioral, developmental, and functional social problems that affect their patients. Depending on the patient's age, the measurements associated with these parameters can be quite different. A pediatrician deals with biological, social, and environmental influences on the developing child as well as with the impact of disease or dysfunction on development. The pediatrician also interacts with parents or guardians to define the health status of patients and to educate and provide anticipatory guidance about the child's normal health and growth. Pediatricians can be active at the community level by helping to prevent or solve problems in child health care and be a public advocate for children's causes. Pediatricians work to reduce infant and child morbidity and mortality, control infectious disease, foster healthy lifestyles, and the day-to-day difficulties of children and adolescents with acute and/or chronic conditions.



Why I Chose Pediatric Nephrology

By Jessica Reid-Adam, MD, Assistant Professor of Pediatrics, Division of Pediatric Nephrology

So I've been asked a ton of times why I chose pediatric nephrology. And I feel my inner nerd emerge when I say why: I just really love the kidney. Yes I just said that. Having already decided on pediatrics, I took a fluids and electrolytes elective in my 4th year of medical school, taught by a pediatric nephrologist. I was completely intimidated while being completely fascinated by the intricate way the kidneys could manage so many things so efficiently. Even now, sometimes my brain hurts from thinking about a certain mechanism of disease involving fluid and electrolyte shifts. But it's still like a big puzzle to me and I find it challenging and fun. As a pediatric intern at Sinai, I was most taken with my kidney disease and renal transplant patients. I always knew I wanted to take care of children, but was attracted to pediatric nephrology because of high acuity of many of the patients. While I may have to come in overnight for an emergency from time to time, I enjoy the challenge and I am gratified by how I can help improve my patients' quality of life, especially through transplantation.

Information about Surgery from AAMC Careers in Medicine

Subspecialties

Adolescent Medicine, Pediatrics
Child Abuse Pediatrics
Developmental- Behavioral Pediatrics
Diagnostic Laboratory Immunology
Medical Toxicology
Neonatal-Perinatal Medicine, Pediatrics
Neurodevelopmental Disabilities
Pediatric Cardiology, Pediatrics
Pediatric Critical Care Medicine, Pediatrics
Pediatric Emergency Medicine, Pediatrics
Pediatric Endocrinology, Pediatrics
Pediatric Gastroenterology, Pediatrics
Pediatric Hematology-Oncology, Pediatrics
Pediatric Infectious Diseases, Pediatrics
Pediatric Nephrology, Pediatrics
Pediatric Pulmonology, Pediatrics
Pediatric Rheumatology, Pediatrics
Pediatric Sports Medicine, Pediatrics
Pediatric Transplant Hepatology, Pediatrics

Length of training

3 Years

Median Salary (all physicians)

\$ 231,637

Patient Profile

5 most frequently encountered conditions

1. Upper respiratory tract infection (other than otitis media)
2. Allergies, asthma
3. Behavioral issues
4. Otitis media
5. Gastrointestinal diseases

Setting

58% of physicians in this specialty practice in an urban setting at:

- Office Based Patient Care
- Hospital Based Physician Staff
- Administration

4% of physicians in this specialty practice in a rural setting at:

- Office Based Patient Care
- Hospital Based Physician Staff
- Administration

Average Hours Worked Per Week

47



Want more information about Pediatrics?

Specialty advisor: Kathleen A Gibbs, MD, and Blair Hammond, MD

Chairman: Lisa Satlin, MD, Professor and Chair of the Department of Pediatrics

Check out the Specialty Information page on the CPS App!

<http://cps.careteamapp.com/home>

Societies, Boards, and Other Organizations

[Academic Pediatric Association](#)
[American Academy of Pediatrics](#)
[American Academy of Pediatrics - Career Information page](#)
[American Board of Pediatrics](#)
[American Pediatric Society and the Society for Pediatric Research](#)
[American Pediatric Surgical Association](#)
[Association of Pediatric Program Director](#)
[Council on Medical Student Education in Pediatrics](#)
[National Institute of Child Health and Human Development](#)
[Society for Developmental and Behavioral Pediatrics](#)

Publications

[AAP News](#)
[JAMA Pediatrics](#)
[Journal of Developmental and Behavioral Pediatrics](#)
[Pediatrics](#)
[Pediatrics in Review](#)
[Pediatric Research](#)

Office of Student Affairs

212.241.4426

Annenberg 13-30

[Blackboard>Student Resources>Career Planning Services](#)

<http://icahn.mssm.edu/education/medical/student-affairs>